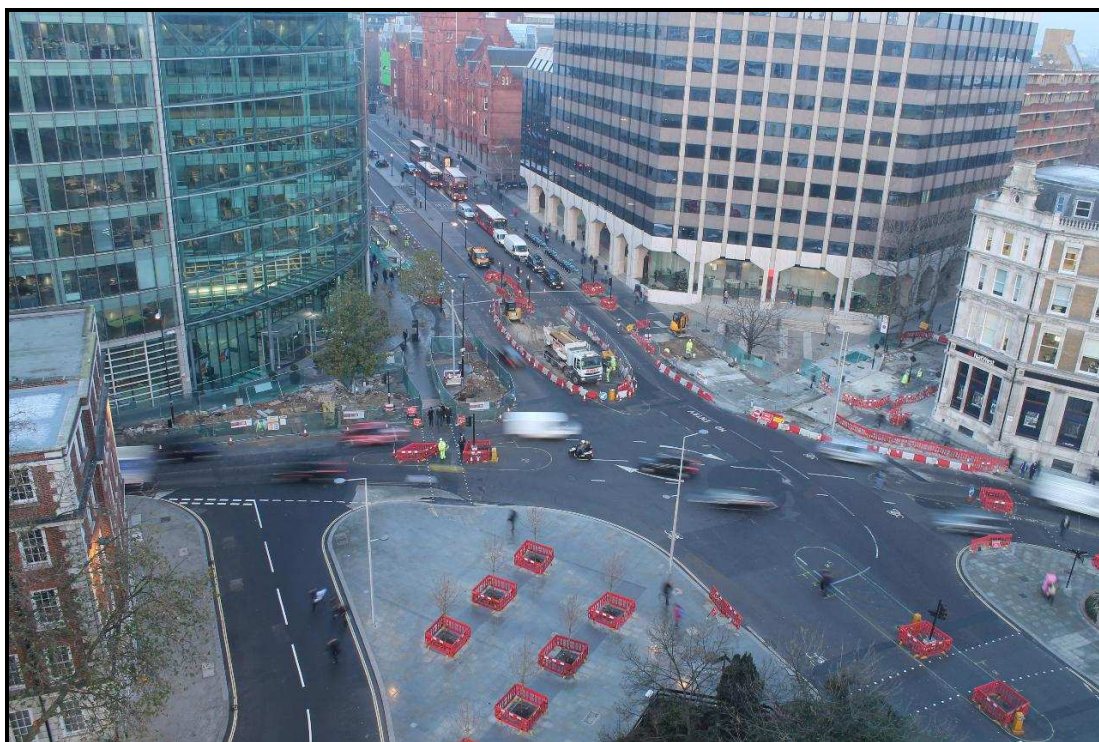




Holborn Circus Work 2013

Update Bulletin 28:

Issue Date: 12/12/2013

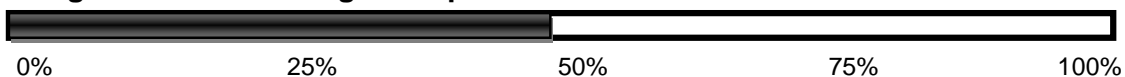


Holborn Circus 12/12/2013

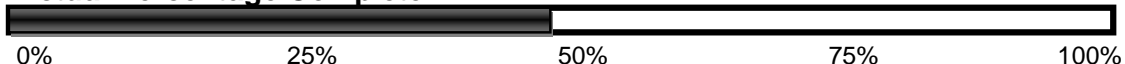
The Overall Programme:

- Phase 1 Preparatory Work: 8 June – 21 July 2013 - complete
- Phase 2 Major Scheme: 22 July – 9 November 2013 – complete
- Phase 3 Major Scheme: 9 November 2013 - Spring 2014
- Phase 4 Carriageway Resurfacing: February – Spring 2014

Programmed Percentage Complete



Actual Percentage Complete





Work completed last week: Phase 3

- Works continued on the new raised table and shared cycle facility at Hatton Garden.
- UK Power Network works on New Fetter Lane outside Sainsbury's building on the south west corner of Holborn Circus was completed and they are currently demobilising from site.
- Works commenced on the footway on the southern side of Holborn, by the bus stop near Fetter Lane.
- Piling preparation for the statue relocation has been completed and the piling will commence from the 6th January 2014.

Work to be undertaken this week: Phase 3:

Saturday 14 December - Friday 20 December 2013

- Carriageway resurfacing will take place at Hatton Garden on Friday, 13 December. Carriageway lining works are programmed for early Saturday 14th December, but this is weather dependant. Hatton Garden will remain closed to vehicular traffic until the week commencing 16th December, a week ahead of programme.
- Minor footway paving works will continue around the raised table at the junction of Holborn Circus and Hatton Garden as well as construction of the shared pedestrian and cycle facility.
- Pedestrian access will be maintained to all properties on Hatton Garden throughout the works.
- Carriageway resurfacing on the remaining section of St Andrew Street will take place on Saturday 14th December. St Andrew Street will be local access only during the resurfacing.
- Works will continue on the footway on the southern side of Holborn, by the bus stop near Fetter Lane.



Road closures/restrictions this week:

1. No vehicular access to Holborn Circus from St Andrew Street until Spring 2014

- Until the completion of the work in Spring 2014, there will be no vehicular access to Holborn Circus from St Andrew Street.
- Pedestrians should follow the signed pedestrian routes.

2. No vehicular access between Holborn Circus and Hatton Garden 9 November – week commencing 16 December 2013

- Hatton Garden, at Holborn Circus, will be closed to vehicles in both directions between 9 November and the week commencing December 2013. A signed diversion route will be in place. When Hatton Garden re-opens at Holborn Circus, vehicles will only be able to travel northbound from Holborn Circus to Hatton Garden.
- Pedestrians should follow the signed pedestrian routes. Pedestrian access will be maintained to all properties on Hatton Garden throughout the works.
- Cyclists will be required to follow the diversion route for general traffic or dismount and walk with pedestrians.

Permanent traffic changes from 9 November 2013

- The right turn from Charterhouse Street into Hatton Garden is no longer permitted. This is a permanent change.
- Access from Hatton Garden to Holborn Circus is no longer permitted for motor vehicles. This is a permanent arrangement.

Website: www.cityoflondon.gov.uk/holborncircusworks

Email: holborncircus@cityoflondon.gov.uk

Telephone: 07720092479

